

MONTHLY MEMBERSHIP PROGRESS REPORT

District 317 A

Results as of: 5/31/2026

GMT:

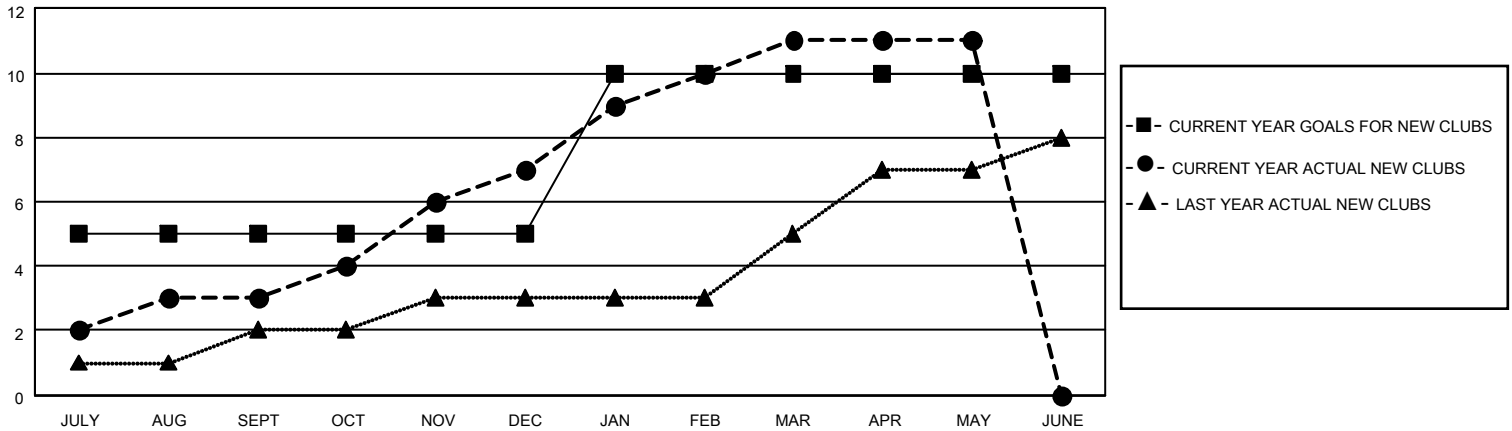
LOCATION INDIA

GMT CA

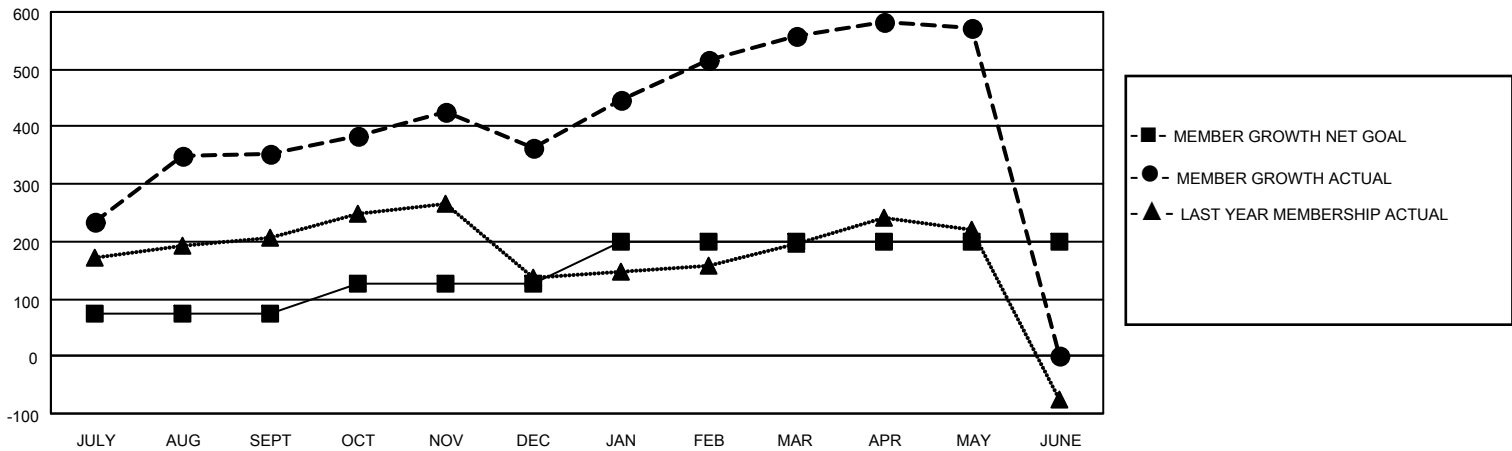
Clubs			
RESULTS FOR 2025-2026			
QUARTER	NEW CLUB GOAL	NEW CLUBS	DROPPED CLUBS
JULY/AUG/SEPT	5	3	0
OCT/NOV/DEC	0	4	1
JAN/FEB/MAR	5	4	0
APR/MAY/JUNE	0	0	0

Members			
RESULTS FOR 2025-2026			
QUARTER	MEMBER GROWTH NET GOAL	MEMBER GROWTH ACTUAL	DROPPED MEMBERS ACTUAL (including transfers)
JULY/AUG/SEPT	75	416	39
OCT/NOV/DEC	50	158	148
JAN/FEB/MAR	75	266	26
APR/MAY/JUNE	0	49	29

GOALS AND ACTUAL NEW CLUBS CUMULATIVE



GOALS AND ACTUAL MEMBERS CUMULATIVE



DROPPED CLUBS: 1	78 CLUBS OF 88 ADDED 1 OR MORE NEW MEMBERS	<u>GENDER DISTRIBUTION</u>	
<u>DROPPED MEMBERS</u>		MALE	1,839 (64.59%)
DECEASED	8	FEMALE	1,008 (35.41%)
CLUB CANCELLED	12	TOTAL FAMILY UNIT MEMBERS	
OTHER	222	1,332	
TOTAL	242	FAMILY MEMBERS PAYING HALF DUES	
		772	

[CLICK HERE FOR CUMULATIVE MEMBERSHIP DATA](#)